

November @ your library®

Your monthly guide to the Wichita Public Library • November 2009

Unless otherwise noted, all events are FREE. With 48-hour notice, the Library can provide signed programs and meet other special needs; call (316) 261-8590 for details. Seating is limited. The Central Library can accommodate larger groups; call 261-8500 for information. Programs are made possible in part by the City of Wichita. Thanks also to the Wichita Public Library Foundation, the National Endowment for the Humanities and the Friends of the Wichita Public Library for making many of these programs possible.

Yeehaw! Western Days Are Here Again

Join in the celebration of cowboy and cowgirl culture. Enjoy the literature, history and music of the plains @ your library.

Sundays @ Alford: Writing Western Noir

Author Max McCoy tells the wicked but true story of how he went from "True Detective" to "Hellfire Canyon" -- and won the Spur and a Kansas Notable Book award along the way. (45-60 minutes)

Alford Branch Library
Sunday, Nov. 1, 2:30 p.m.

The Free Staters



The Free Staters combine fiddle, early fretless banjo, parlor guitar, buffalo rib bones, donkey jawbone and tambourine to recreate the music you would have heard in the

1850s. Dressed in 19th century clothing and playing period instruments or reproductions of those instruments, the band looks and sounds like it stepped off the front porch and into the present. (60 minutes)

Alford Branch Library
Monday, Nov. 2, 2:30 p.m.

Cattle Towns and Soiled Doves

The Contessa (as portrayed by Marla Matkin) transports you to cow towns, bringing to life the riveting characters that strode the streets and rode the range. Her invitation is an appeal to suspend reality and travel back to the boomtowns where men lived by the gun and women lived by their wits. It's the Victorian Era on the wild side. (60 minutes)

Alford Branch Library
Monday, Nov. 9, 2:30 p.m.

Thomas Ewing Jr., Frontier Lawyer and Civil War General

Ronald D. Smith, an attorney from Larned, Kan., and author of "Thomas Ewing Jr., Frontier Lawyer and Civil War General," will discuss the life of this historical figure. (60 minutes)

Central Library
Tuesday, Nov. 10, 7:00 p.m.

Cowboys and Kansas: Stories from the Tallgrass Prairie

Historian Jim Hoy grew up on a ranch in the Flint Hills that's been in his family for five generations. Hear his stories from folklore and his own experiences. (60 minutes)

Alford Branch Library
Monday, Nov. 16, 2:30 p.m.

Musician Ann Zimmerman

Ann Zimmerman sings the prairie into universal language. Blending old and new traditions with her own award-winning songs, Ann's concerts tell stories and paint portraits, brilliantly-colored and unexpected, enhanced by an irresistible stage presence. Ann grew up in Salina, Kansas, singing folksongs with her family to the strums of her mother's autoharp. (60 minutes)

Alford Branch Library
Monday, Nov. 23, 2:30 p.m.

Cowboy Poet Sam M. Kiefer

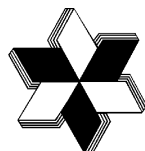
Sam Kiefer attended Fort Scott Community College and Kansas State University on rodeo scholarships. A rider of bulls and broncs, he has since retired after qualifying for the Prairie Circuit finals numerous times. While he works at the Wolf Creek nuclear power plant, his love of western culture keeps him in the country, tending grass cattle and writing cowboy poetry. (60 minutes)

Alford Branch Library
Monday, Nov. 30, 2:30 p.m.



Table of Contents

- 2 Events for Adults
- 3 Events for Children and Families
- 4 The Big Read



WICHITA PUBLIC LIBRARY
The Discovery Center
www.wichita.lib.ks.us



Events for Adults

Central Library

Hands-on Help: File Management

Get help with computer file management during this freeform coaching session. Bring your specific question or project. No registration required. (90 minutes)

Thursday, Nov. 12, 10:30 a.m.

Crafts 4 Fun

Adults need creativity in their lives, so come learn a craft with us each month this fall! Have fun with decorative painting in November. Registration is required so there will be enough supplies for everyone; call 261-8506 to register. (90 minutes)

Thursday, Nov. 12, 7:00 p.m.

Hands-on Help: Computer Basics

Ask your basic computing questions anytime during this freeform session. Bring your specific question or project. No registration required. (90 minutes)

Wednesday, Nov. 18, 2:30 p.m.

Alford Branch Library

German Heritage of Kansas

More than a third of Kansas residents are of German ancestry. This talk explores the major German immigrant groups and their impact on Kansas agriculture, education and Midwestern culture. Presented by Dr. William D. Keel of the University of Kansas. Co-sponsored by the Wichita Genealogical Society. (2 hours)

Saturday, Nov. 21, 1:00 p.m.

Angelou Northeast Branch Library

The Red Dress Book Chat

Pearl Cleage's life-changing books have inspired readers to join the characters in self-discovery. Come and connect with this conversation surrounding books that encourage and inspire you on your journey through life. November's discussion is on "I Wish I Had a Red Dress." (90 minutes)

Tuesday, Nov. 10, 6:00 p.m.

Rockwell Branch Library

Care for the Caregiver

Celebrate National Family Caregiver's Month at this panel discussion. Caregivers -- anyone who provides assistance to someone else -- are often family members. The value of services these family caregivers provide for "free" is estimated to be \$315 billion a year. This session provides tips, resources, and a deserved boost for current and potential caregivers. Learn more about the challenges and where to find help. Information will be available from Central Plains Area Agency on Aging, Alzheimer's Association, Senior Services of Wichita and other local providers that serve the aging community in Sedgwick, Butler and Harvey Counties. (60 minutes)

Tuesday, Nov. 3, 7:00 p.m.

Changing the Face of Medicine: Celebrating America's Women Physicians

This traveling exhibition shows how women struggled for the right to study in medical schools and to practice medicine in the United States. The traveling exhibition "Changing the Face of Medicine: Celebrating America's Women Physicians" was developed by the Exhibition Program of the History of Medicine Division of the National Library of Medicine in collaboration with the American Library Association Public Programs Office. The traveling exhibition was made possible by the National Library of Medicine and the National Institutes of Health Office of Research on Women's Health. The American Medical Women's Association provided additional support.

Central Library

Wednesday, Nov. 25, to Wednesday, Jan. 20

Monthly Book Discussions

These groups are open to the public and require no advance registration. Books may be available for checkout at the hosting branch; contact the branch for details. (60 minutes)

Central Library

3rd Tuesdays Group

"The Red Tent" by Anita Diamant

Tuesday, Nov. 17, 7:00 p.m.

Alford Branch Library

Masters of Mystery

"Blacklist: A V.I. Warshawski Novel" by Sara Paretsky

Wednesday, Nov. 18, 7:00 p.m.

Evergreen Branch Library

1st Tuesdays Group

"Great Tales & Poems of Edgar Allan Poe" by Edgar Allan Poe

Tuesday, Nov. 3, 1:00 p.m.

1st Thursdays Group

"Great Tales & Poems of Edgar Allan Poe" by Edgar Allan Poe

Thursday, Nov. 5, 7:00 p.m.

3rd Thursdays Group

"Revenge of the Middle-Aged Woman" by Elizabeth Buchan

Thursday, Nov. 19, 1:00 p.m.

Orchard Park Branch Library

1st Fridays Group

"Great Tales & Poems of Edgar Allan Poe" by Edgar Allan Poe

Friday, Nov. 6, 1:00 p.m.

Rockwell Branch Library

Cozy Mystery - Last Mondays

"Christmas is Murder" by C.S. Challinor

Monday, Nov. 30, 1:00 p.m.

Westlink Branch Library

3rd Tuesdays Group

"Great Tales & Poems of Edgar Allan Poe" by Edgar Allan Poe

Tuesday, Nov. 17, 12:45 p.m.

Events for Children & Families

Nursery Rhyme Time

Music, rhymes, activities and stories for children ages 2 and under with an adult helper. (20 minutes)

Central Library

Wednesdays, Sept. 9-Dec. 2, 10:30 a.m. (No session Nov. 11)

Fridays, Sept. 11-Dec. 4, 10:30 a.m. (No session Nov. 27)

Rockwell Branch Library

Tuesdays, Sept. 15-Dec. 1, 10:30 a.m. and 11:05 a.m.

Westlink Branch Library

Thursdays, Sept. 17-Dec. 3, 10:30 a.m. (No session Nov. 26)

Fridays, Sept. 18-Dec. 4, 10:30 a.m. (No session Nov. 27)

Toddle Time

Stories, rhymes and motion activities for 2-year-olds with an adult helper. Registration required; contact the hosting library to register. (20 minutes)

Alford Branch Library

Tuesdays, Sept. 15-Dec. 1, 10:30 a.m.

Rockwell Branch Library

Thursdays, Sept. 17-Dec. 3, 10:30 a.m. (No session Nov. 26)

Westlink Branch Library

Tuesdays, Oct. 27-Dec. 1, 10:30 a.m.

Preschool Storytime

Stories, fingerplays and more for ages 3-6. (30 minutes)

Central Library

Tuesdays, Sept. 8-Dec. 1, 10:30 a.m.

Alford Branch Library

Wednesdays, Sept. 16-Dec. 2, 10:30 a.m. (No session Nov. 11)

Evergreen Branch Library (English/Spanish bilingual storytime)

Wednesdays, Sept. 9-Nov. 25, 10:30 a.m. (No session Nov. 11)

Rockwell Branch Library

Wednesdays, Sept. 16-Dec. 2, 10:30 a.m. (No session Nov. 11)

Westlink Branch Library

Tuesdays, Sept. 15-Dec. 1, 10:30 a.m. (children only)

THE LITTLE READ @ Preschool Storytime

Join others committed to early childhood literacy as Wichita's preschoolers share Ian Falconer's "Olivia" Nov. 15-21. The Little Read is made possible by IMA and the Leonard and Celia Levand Trust.

Central Library: Susan Peters, KAKE

Tuesday, Nov. 17, 10:30 a.m.

Alford Branch Library: John Snyder, KSN

Wednesday, Nov. 18, 10:30 a.m.

Evergreen Branch Library: Mayor Carl Brewer

Wednesday, Nov. 18, 10:30 a.m.

Rockwell Branch Library: City Manager Robert Layton

Wednesday, Nov. 18, 10:30 a.m.

Westlink Branch Library: Felicia Rolfe, KWCH/Kansas CW

Tuesday, Nov. 17, 10:30 a.m.

Central Library

Pajama Time!

Children aged 3-8 will listen to some of our favorite bedtime stories, sing songs and more. Wear your pajamas and bring a stuffed animal if you like. (30-45 minutes)

Thursday, Nov. 5, 7:00 p.m.

Fancy Nancy Tea Party & Fashion Show

Wear your fanciest clothes, speak your fanciest words and get ready to have a marvelous (that's "fancy" for fun) time! For ages 4-8. Registration begins Wednesday, Nov. 4; contact the Central Library. (60 minutes)

Tuesday, Nov. 17, 7:00 p.m.

Star Wars Book Party

May the Force be with you! Expert are you? Fellow Star Wars fans will you join for trivia and a craft. Your favorite character come as. Away put your weapons, need them you will not. The light saber, the symbol of the Jedi it is, and allowed it will be. For ages 7-11. Registration begins Wednesday, Nov. 4; contact the Central Library. (60 minutes)

Wednesday, Nov. 18, 7:00 p.m.

Angelou Northeast Branch Library

Make and Take Craft

Come to the library for some fun crafty projects that you can complete and take home with you. Ages 5-12. (2 hours)

Saturday, Nov. 21, 1:30 p.m.

Evergreen Branch Library

Sock Puppets!

Have you ever wondered what to do with those extra single socks? Worry no more! Bring them to the library and create fabulous and funny sock puppets. Ages 5-10 with family. (45 minutes)

Thursday, Nov. 19, 7:00 p.m.

Rockwell Branch Library

Puppet Show

For children aged 3-10. (20-30 minutes)

Wednesday, Nov. 18, 10:30 a.m.

Westlink Branch Library

Family Storytime

Interactive storytelling for children aged 3-7 with their families. (30 minutes)

Wednesdays, Sept. 16-Dec. 2, 10:30 a.m.

Thursdays, Nov. 5 and Nov. 12, 7:00 p.m.

Family Fun Time: All Dressed Up

Wear your best to a party-time story, activity and craft for families with children ages 3 and older. (45 minutes)

Thursday, Nov. 19, 7:00 p.m.

The Big Read

“Great Tales and Poems of Edgar Allan Poe”

October-November 2009

The Big Read Book Discussions



While The Big Read covers multiple works, these discussions target a few selections. For more discussion opportunities, see the Library's monthly book discussion groups inside or bigreadwichita.org. (60 minutes)

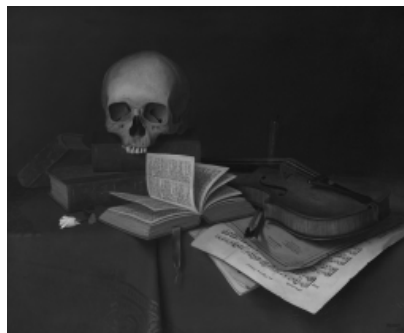
Central Library

The Poems of Edgar Allan Poe
Monday, Nov. 2, 7:00 p.m.

Orchard Park Branch Library

Supernatural Stories: "The Fall of the House of Usher," "Ligeia" and "The Masque of the Red Death"
Wednesday, Nov. 4, 2:30 p.m.

The Big Read is an initiative of the National Endowment for the Arts in partnership with the Institute of Museum and Library Services and Arts Midwest. Image: William Michael Harnett, *Mortality and Immortality* (1876). Oil on canvas, 22 1/4" x 27 1/4", The Roland P. Murdock Collection, M58.45, used courtesy of the Wichita Art Museum.



Poe in Person: David Keltz

An internationally known Poe interpreter, David Keltz will offer a glimpse into the personal and professional life of Poe. Keltz has performed at the International Poe Festival in Prague, at the Poe Studies International Association Conference, at Poe museums, the National Theatre and the Smithsonian Institution. His portrayal of Poe has been filmed for productions for the BBC, the History Channel and NFL. Experience Poe and tales such as "The Tell-Tale Heart" like never before!

Orpheum Performing Arts Centre, 200 N. Broadway

Saturday, Nov. 7, 7:30 p.m.

Poe in Context: Dr. Stuart Levine

Poe may be known as our most influential critic, the American author with the greatest impact on world literature, but he is not the mad genius of the popular imagination. Since 1941 we have known that many of the wild things we used to believe were invented by a rival. Review what we now know about Poe's output -- his stories, his poems, his one and a half novels, his literary thinking, "Eureka" (his shot at cosmology), his editorial work -- and what we don't know about his life. Levine, Professor Emeritus in English at the University of Kansas, has written widely on Poe. Levine's books will be available for purchase and signing after the program. (60 minutes)

Central Library

Sunday, Nov. 22, 2:30 p.m.

Wichita Public Library Locations

Central Library

261-8500
223 S. Main
(Near Douglas & Main)

Mon.-Thu. 10:00 a.m. – 9:00 p.m.
Fri.-Sat. 10:00 a.m. – 5:30 p.m.
Sun. 1:00 – 5:00 p.m.

Alford ☼

337-9119
3447 S. Meridian
(Near I-235 & S. Meridian)

Mon.-Thu. 10:00 a.m. - 9:00 p.m.
Fri.-Sat. 10:00 a.m. - 5:00 p.m.
Sun. 1:00 - 5:00 p.m.

Angelou

Northeast ☼
688-9580
3051 E. 21st
(Near 21st & Hillside)

Tues. 1:00 - 8:00 p.m.
Wed.-Sat. 11:00 a.m. - 5:30 p.m.
Sun. 1:00 - 5:00 p.m.
Closed Mon.

Comotara

688-9350
2244 N. Rock Rd
Inside Dillons (At 21st & Rock)

Mon., Wed., Thu. 10:00 a.m. - 8:00 p.m.
Tues., Fri., Sat. 10:00 a.m. - 5:30 p.m.
Sun. 1:00 - 5:00 p.m.

Evergreen ☼

303-8181
2601 N. Arkansas
(At 25th & Arkansas)

Mon.-Thu. 10:00 a.m. - 9:00 p.m.
Fri.-Sat. 10:00 a.m. - 5:00 p.m.
Sun. 1:00 - 5:00 p.m.

Linwood

337-9125
1901 S. Kansas
(Near Mt. Vernon & Hydraulic)

Mon. 12:00 - 8:00 p.m.
Tues.-Fri. 10:00 a.m. - 5:30 p.m.
Closed Sat. and Sun.

Orchard Park

337-9084
4808 W. 9th
(Near 9th & West)

Mon. 1:00 - 8:00 p.m.
Tues.-Fri. 11:00 a.m. - 5:30 p.m.
Closed Sat. and Sun.

Rockwell ☼

688-9361
5939 E. 9th
(Near 9th & Edgemoor)

Mon.-Thu. 10:00 a.m. - 9:00 p.m.
Fri.-Sat. 10:00 a.m. - 5:00 p.m.
Sun. 1:00 - 5:00 p.m.

Westlink ☼

337-9456
8515 Bekemeyer
(Near Central & Tyler)

Mon.-Thu. 10:00 a.m. - 9:00 p.m.
Fri.-Sat. 10:00 a.m. - 5:00 p.m.
Sun. 1:00 - 5:00 p.m.

Planeview Community Library

(Operated by Colvin Elementary School)

973-7609
2820 S. Roosevelt
(Near Ross Pkwy & Hillside)

Mon.-Fri. 10:00 a.m. - 5:00 p.m.
Except school holidays and in-service days
Closed Sat. and Sun.

All Wichita Public Library locations will be closed Wednesday, Nov. 11, Thursday, Nov. 26, and Friday, Nov. 27.

Manage Your Library Account by Phone: 262-6991 Deaf Services TDD Line: 262-3972 ☼ ADA Computer Workstation Available

All Wichita Public Library locations offer public internet access and materials depositories.

Check the Library catalog and manage your account online at www.wichita.lib.ks.us.